



Outsourcing the Easy Way: Building Plan Review and Inspections

Presented by Bradley Arnold, Sumter County
Administrator

Florida Association of County Managers

June 29, 2017



Sumter County

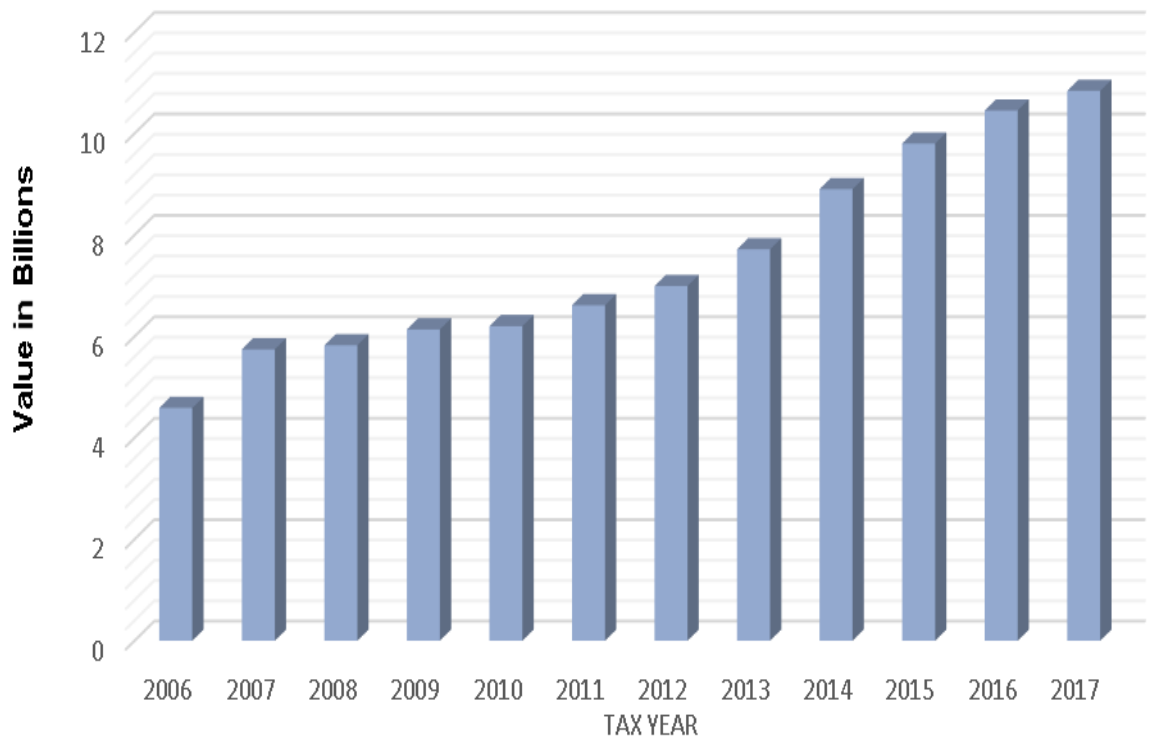
- Vision Statement Points

- Innovative leadership
- Strategic leadership
- Essential services
- Effective customer service
- Fiscally efficient

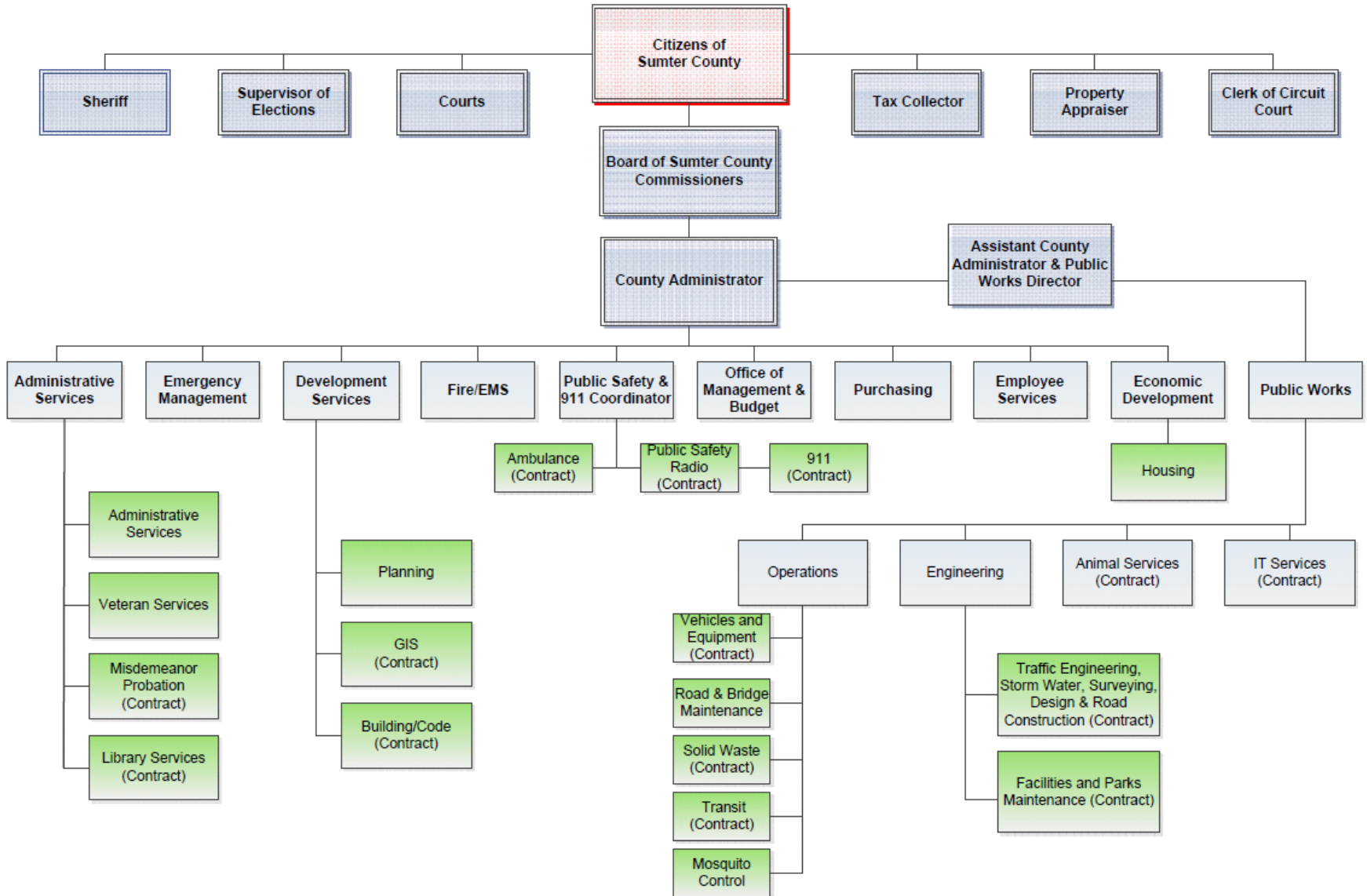
- Mission Statement Points

- Most efficient
- Most effective
- Responsive
- Achieve economic growth
- Quality customer service
- Safe community

County Taxable Value Growth

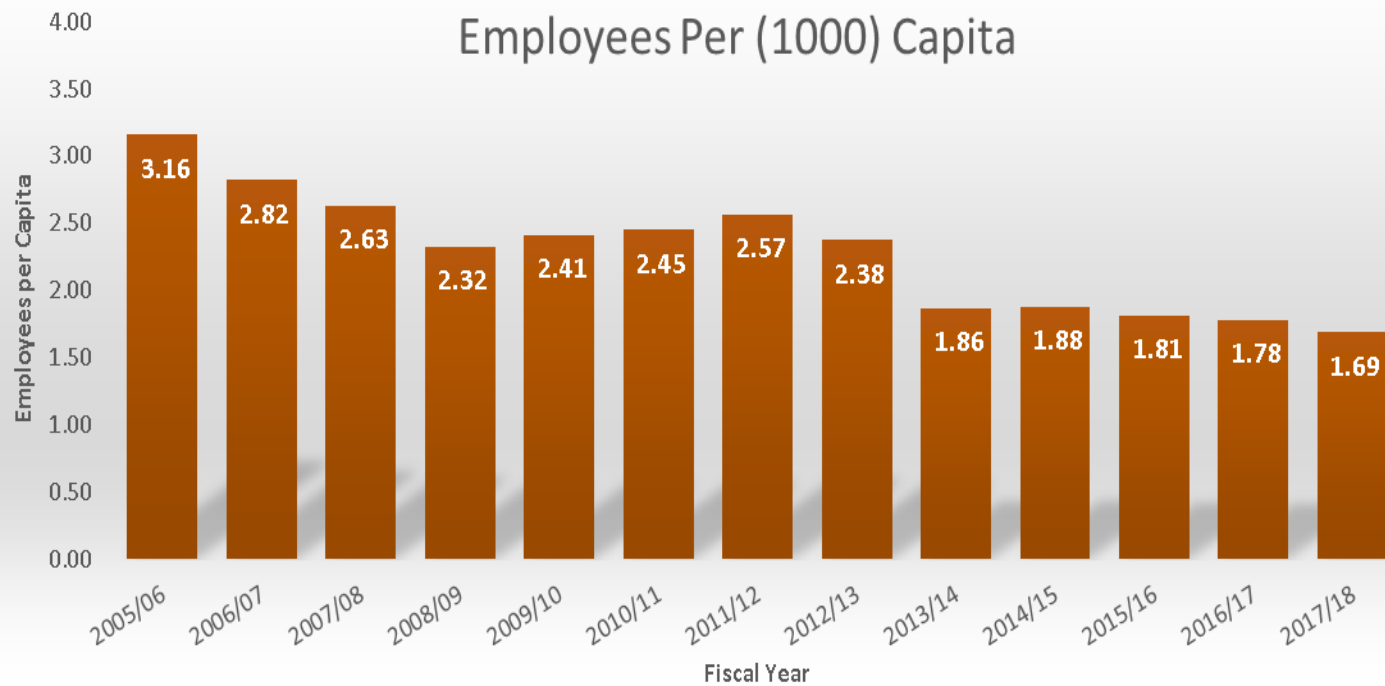


FY 16/17 Sumter County Organization

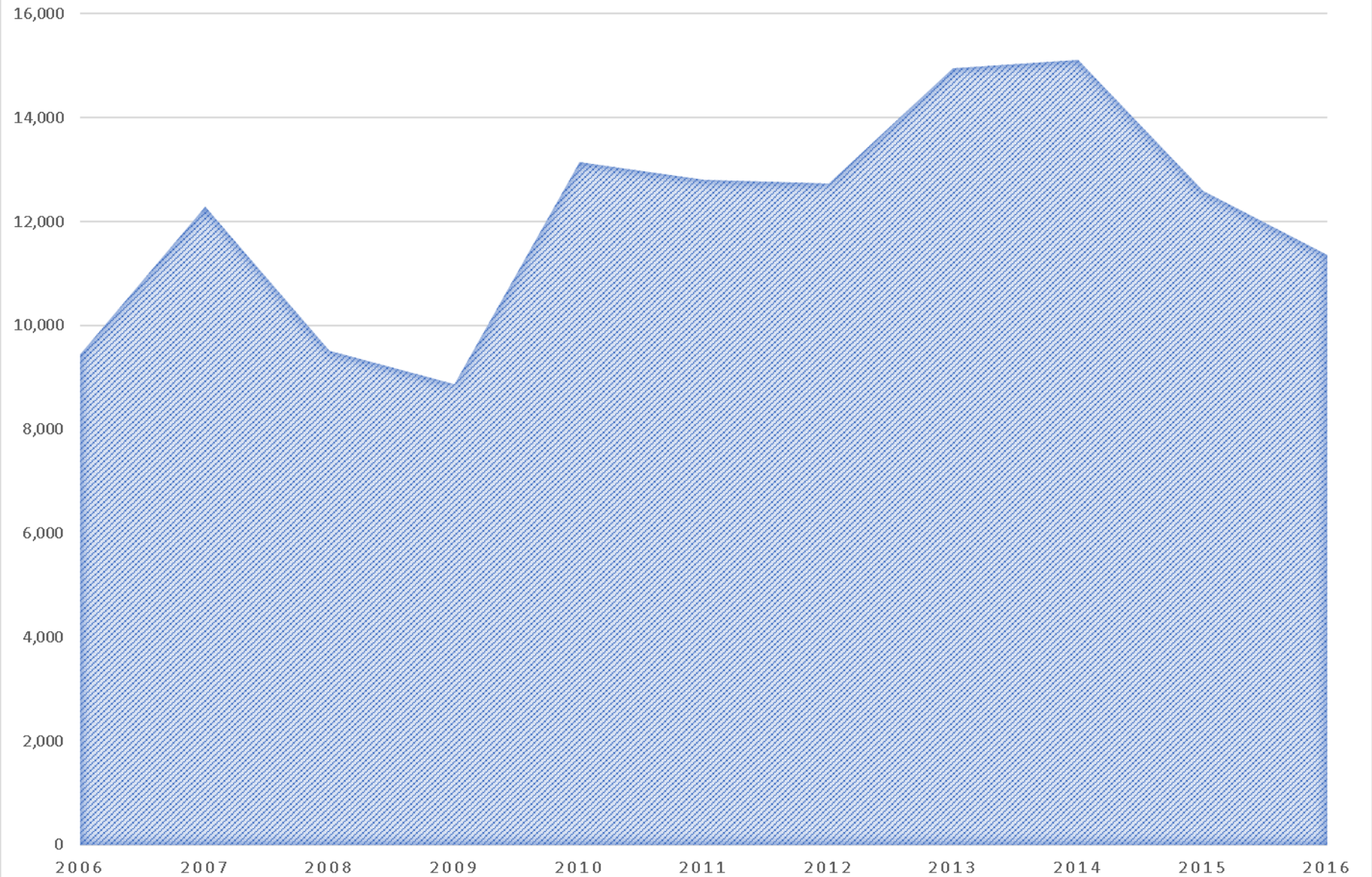




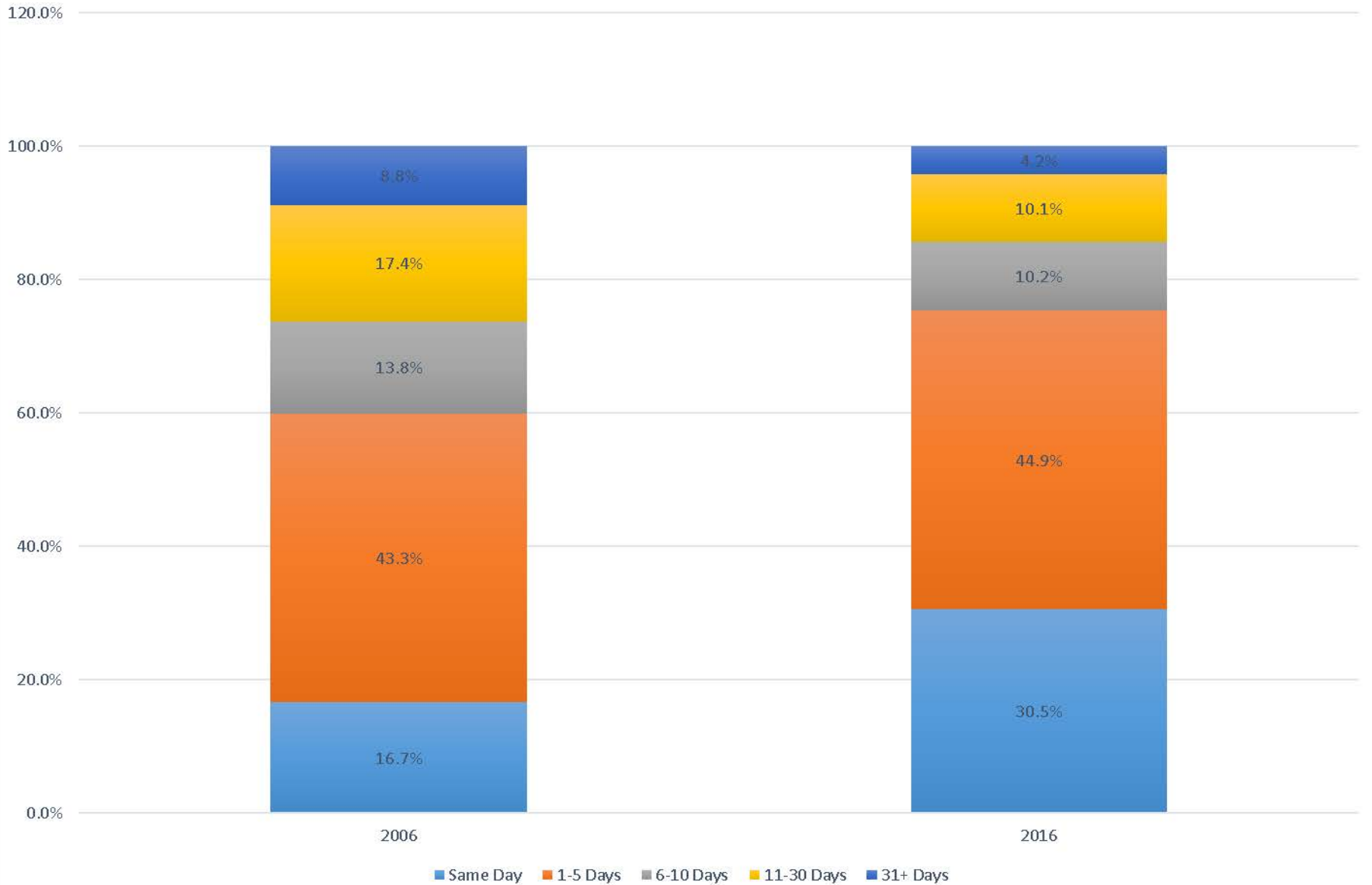
Sumter County BOCC Employees Per (1000) Capita



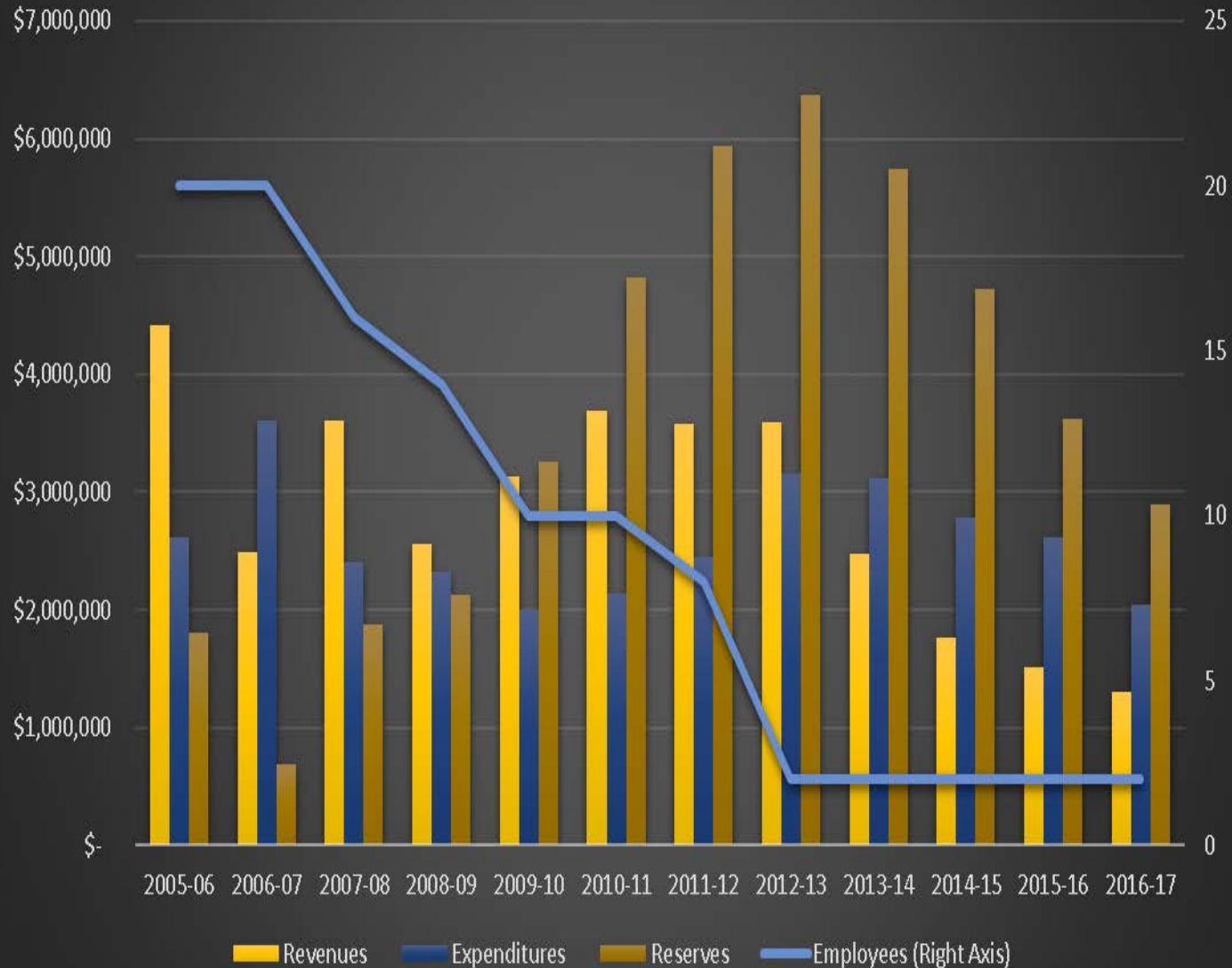
TOTAL PERMITS ISSUED PER YEAR



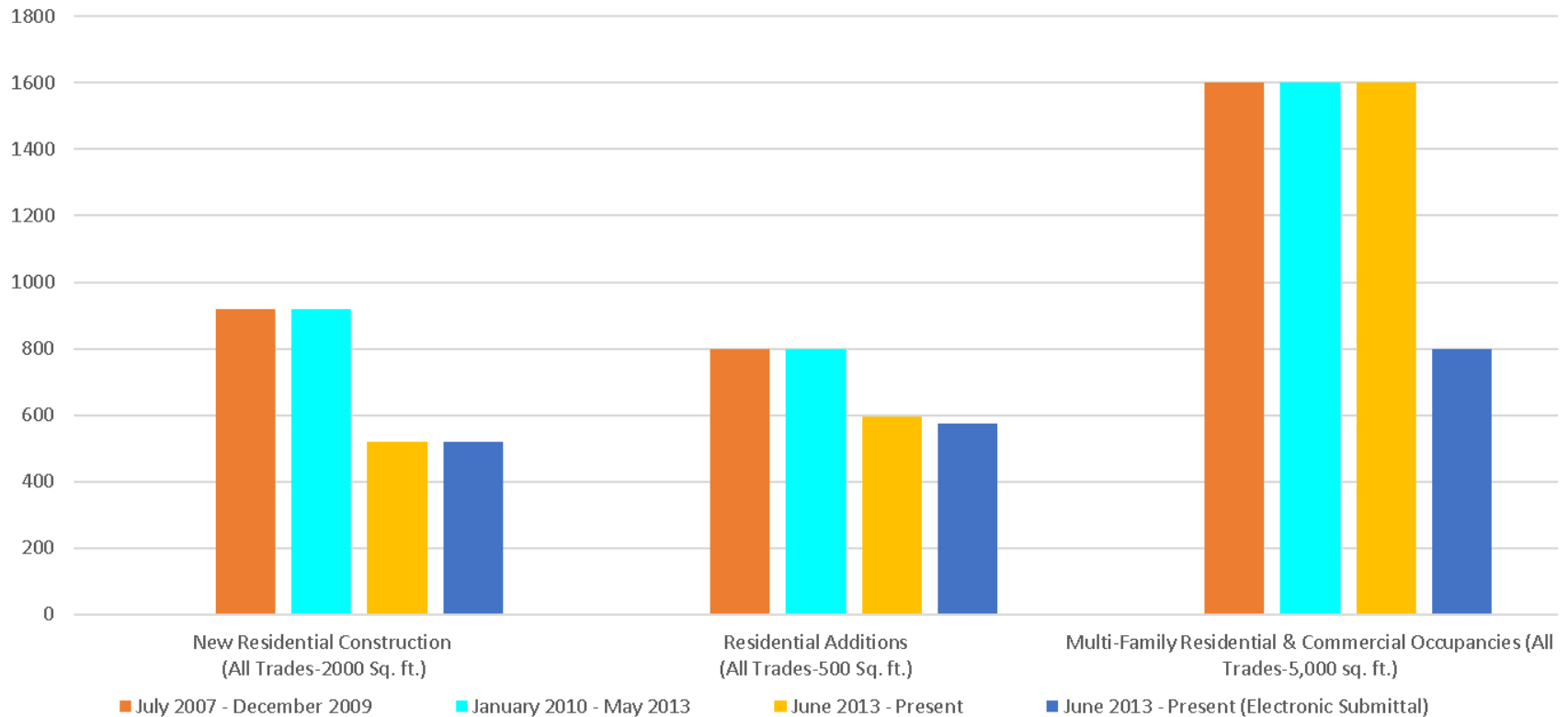
PERCENTAGE OF PERMITS ISSUED WITHIN TIME LIMITS



Building Services Fund



Sumter County, Florida Cost of Building Permit Fees Per Type of Use and E-Submission Discounts (July 2007 to present)



Notes:

Building permit fees include ordinarily required inspections, but not reinspections.

All trades means building, electrical, mechanical, and plumbing, but not gas)

New residential construction is based the average of fees on a 2,000 square foot dwelling unit, depending upon the type of construction and whether the trades are separate or combined.

Residential additions are based on a 500 square foot addition.

Multi-family and commercial construction is based on a 5,000 square foot commercial building. Occupancies such as factory, high hazard, storage, or utility will have higher rates. Examples could be a 4-8 unit apartment building, a convenience store or small strip center, or a small office complex.

Simple Scope of Services for RFQ

- **Services will include, but may not be limited to, the following:**
 - Provision of residential and commercial structural inspections for compliance with Florida Building Code and other applicable state statutes
 - Provision of residential and commercial structural plan reviews for compliance with Florida Building Code and other applicable state statutes
- **Qualification/Experience requirements:**
 - The Respondent must submit complete and detailed summaries of the qualifications/experience that qualify them to provide the identified scope of services.
- **Respondents must demonstrate the following:**
 - Adequate and sufficient personnel to provide timely service under all conditions.
 - Inspectors and Plans Examiners are properly licensed by the Florida Department of Business and Professional Regulation.
 - Experience with local jurisdictions of a similar size, complexity, and level of customer service as Sumter County.
- **Supervision and Personnel**
 - Respondent must demonstrate how the operation will be supervised and what quality controls will be in place for the required scope of services.
- **Records**
 - Respondent must demonstrate how records will be maintained and accessed in accordance with local, State, and Federal Public Records Retention Requirements.

Summary of Benefits of Outsourcing Building Plan Review and Inspections

- Increased response time for customers
- Decreased rates for customers
- Aided in consolidation of this service with four of our five municipalities
- Set the stage for our July accreditation assessment
- Eliminated Fire plan review and inspection coordination issues and fees
- Eliminated County recruitment and retention
- Contractor assumes all liabilities to adjust the number of personnel for demand of service